

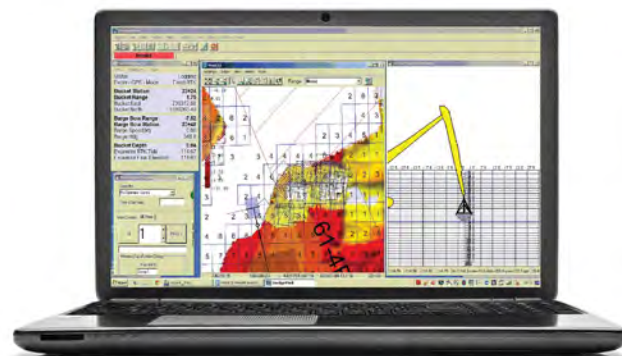


# DREDGEPACK®

SOFTWARE FOR DREDGING OPERATIONS

## About DREDGEPACK®

DREDGEPACK® is software for dredging control on cutter suction, hopper, excavator and bucket dredges. It's designed to assist your company in monitoring its digging operations. Area maps, nautical charts and DXF files can be downloaded for geographical reference. A color-coded matrix shows your current depth, while a profile view shows both your current and required depths. The matrix is updated in real time to ensure you meet your targeted depth. In an industry where you can be heavily fined for not digging to the required depth, DREDGEPACK® becomes a crucial component to any dredging project.



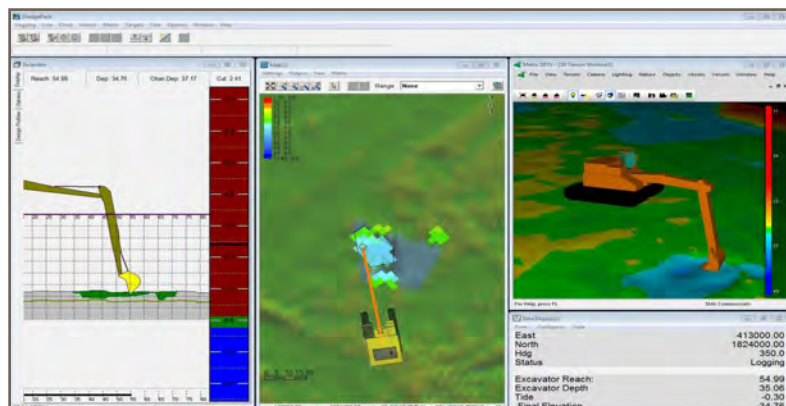
**Get the Job Done Right!**

## Benefits

Dredge plans are now more complex than ever. DREDGEPACK® provides you with the design tools to be able to accurately model almost any dredge plan. Real-time, cross sectional profiles show you the 'As Dredged' and 'As Surveyed' surfaces. These profiles can be displayed 'along track' or 'across track' for hopper dredges. For cutter suction dredges and excavators, you can display a cross sectional profile along the arc of rotation. That lets you see exactly what's coming up as you swing left/right.

## Features

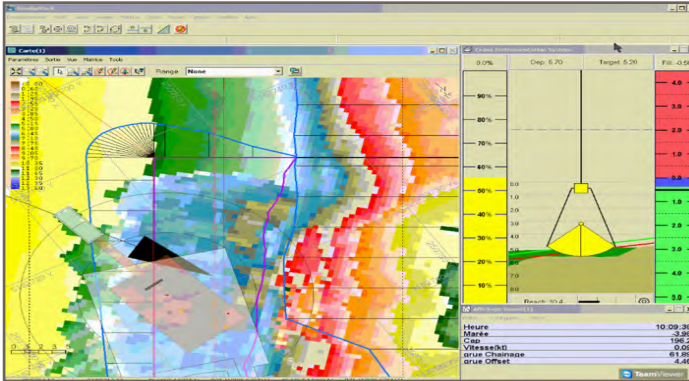
- Fast and reliable customer support
- Single platform to streamline surveying and dredging operations
- Supports sensors for dredge operations
- Ready built interfaces to the USACE dredge quality management system



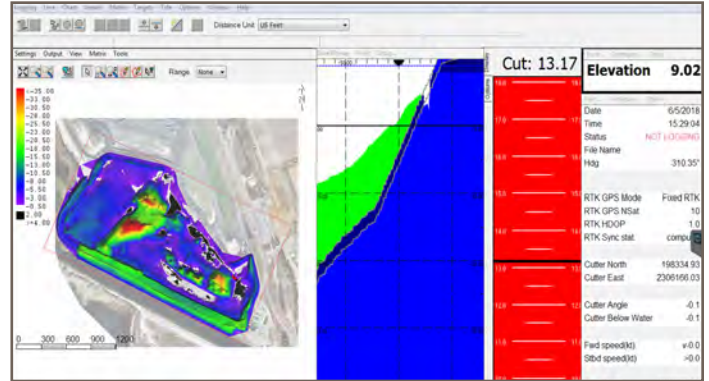
Real time 3D Display

## Included in DREDGEPACK®

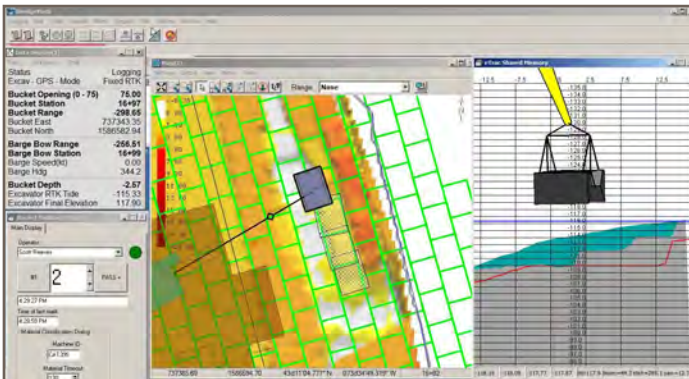
- HYPLOT: HYPACK® plotting program
- Bucket Patterns: Generate bucket patterns in advance of digging
- Dredge Statistics: View a distribution of depths to monitor over-digging
- MTX Reporter: Produce a graphic that shows the dredge progress based on each shift or each day
- Bucket Reports: Keep a history of the location of each drop (or placement) and export it to your CAD/GIS package
- CHANNEL DESIGN and ADVANCED CHANNEL DESIGN: HYPACK® programs to design simple and complex channel plans



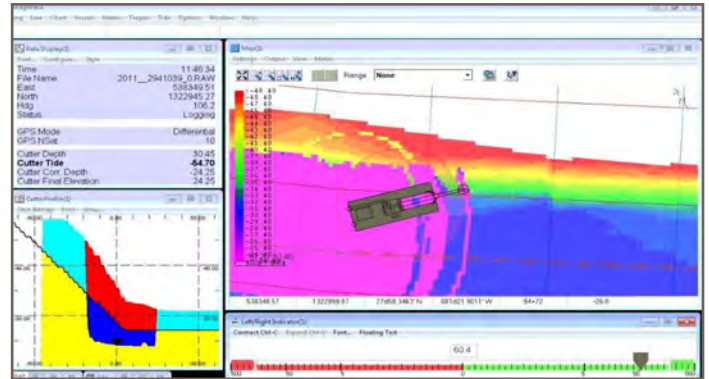
DREDGEPACK® provides the solution to track the depth and position of the bucket on a clamshell dredge.



DREDGEPACK® installed on a cutter suction dredge with plan, sectional, and 3D views.



Proposed bucket patterns for a crane or bucket operation can be generated in advance. DREDGEPACK® also keeps a history of bucket drops/placements for your reports.



DREDGEPACK® installed on a cutter suction dredge with a carriage spud. Note the real-time cross section that is taken along the arc of the cutter head!

## INDUSTRY LEADING SUPPORT

The HYPACK Technical Support team is always ready to assist with any issues and maintains support by phone, email and online. A HYPACK Support Team member can log into your computer through an Internet connection and remotely troubleshoot software issues as they arise.

## USACE DREDGE QUALITY MANAGEMENT

DREDGEPACK® also allows you to meet your reporting requirements. The software is compliant with the USACE Silent Inspector requirements for hopper dredges. It is also compliant with the proposed Silent Inspector requirements for cutter suction and excavators.



**HYPACK**  
56 Bradley Street  
Middletown, CT 45387

1-860-635-1500  
sales@hypack.com  
**HYPACK.com**