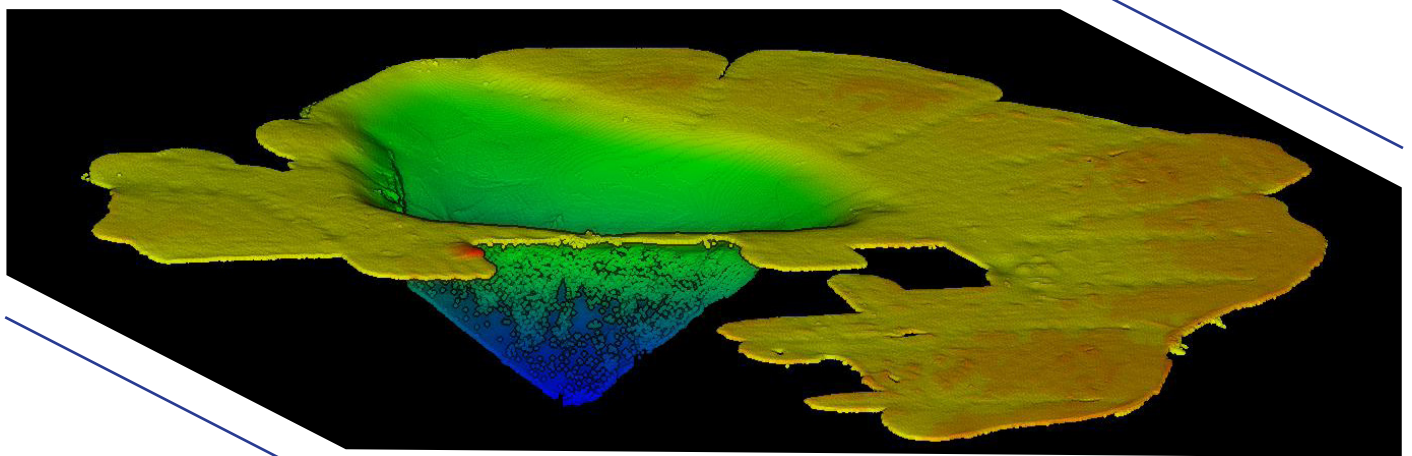


M4 Multibeam Sonar

M4 is a highly-versatile, high-resolution multibeam echo sounder which is also extremely simple to use and to integrate. Universities (Engineering, Robotics, Archeology etc.) will find this affordable cutting-edge sonar to be the perfect choice for advanced programs. The hydrodynamic form factor and low power consumption makes M4 the ideal choice for small autonomous surface vehicles and AUVs alike.

Ponds and Lakes	★★★★★	University Research	★★★★★
Harbors/Construction	★★★★	Dredging	★★★★
Coastal Waters	★★★★★	Archeology	★★★★★



Specifications:

Swath coverage	Up to 130 degrees
Number of RX beams	256
TX beam width along-track	1.45°
RX beam width	1° ±0.1
Range	>200m
Beam distribution	Equi-Distant and equi-angular beam distribution
Pressure rating	60m
Ping Rate	50 Hz
Outputs	Bathymetry, Side Scan
Compatible with	Hypack, Qinsy, BeamworX, SonarWiz a.o
Weight w. bracket	Air: 3.4 kg Water: 1.1 kg



data acquisition included

