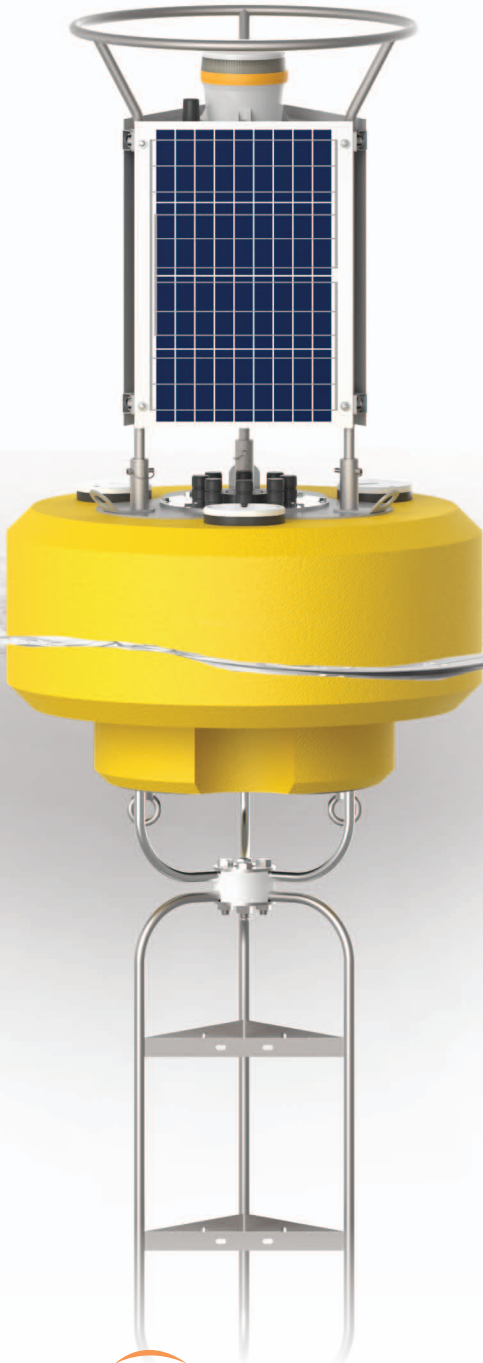


CB-650

DATA BUOY

- Self-powered data logging buoy
- Wi-Fi, radio, cellular or satellite telemetry
- Supports a variety of environmental sensors
- Accommodates most environmental data loggers
- Rugged polymer-coated foam hull



The NexSens **CB-650** Data Buoy is designed for deployment in lakes, rivers, coastal waters, harbors, estuaries and other freshwater or marine environments. The floating platform supports both topside and subsurface environmental monitoring sensors including weather stations, wave sensors, thermistor strings, multi-parameter sondes, Doppler current profilers and other monitoring instruments.

The buoy is constructed of an inner core of cross-linked polyethylene foam with a tough polyurea skin. A topside 40" tall stainless steel tower includes three 30-watt 12VDC unbreakable solar panels, and a center 10" ID x 21.5" tall data well accommodates batteries, data loggers, sensors and more. Three 4" pass-through holes with female NPT bottom threads allow for quick connection of instrument deployment pipes and custom sensor mounts. The stainless steel frame supports both single point and multi-point moorings.

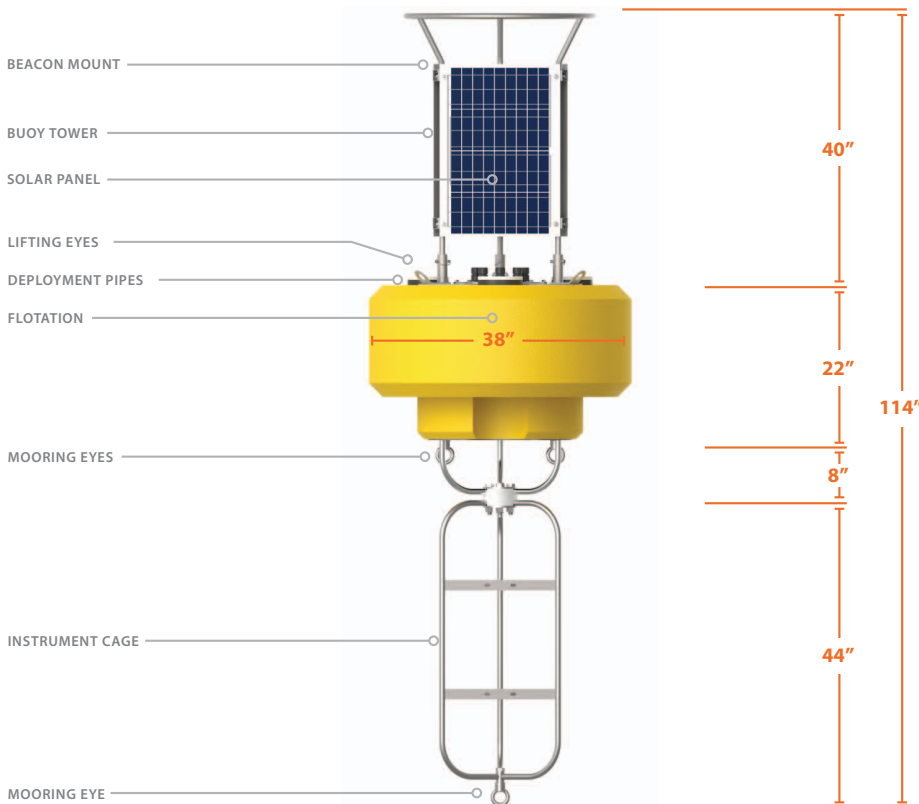
The **CB-650** Data Buoy is optimized for use with NexSens data loggers. Wireless telemetry options include Wi-Fi, spread spectrum radio, cellular and Iridium satellite. Compatible digital and analog sensor interfaces include RS-232, RS-485, SDI-12, VDC, mA and pulse count. The top of the instrument well includes 8 pass-through ports for power and sensor interface. Each port offers a UW receptacle with double O-ring seal for a reliable waterproof connection.

CB-650

DATA BUOY

specifications

Hull Dimensions	38" (96.52 cm) outside diameter; 22" (55.88 cm) tall
Tower Dimensions	40" (101.60 cm) tall, 7/8 tubular
Data Well Dimensions	10.3" (26.16 cm) inside diameter; 21.5" (54.61 cm) tall
Weight	215 lbs. (97.52 kg)
Buoyancy	650 lbs. (294.84 kg)
Hull Material	Cross-linked polyethylene foam with polyurea coating & stainless steel deck
Tower /Hardware Material	316 stainless steel
Mooring Attachments	1 or 2 point, 3/4" eye nuts
Solar Power	(3) 30-watt 12 VDC solar panels



parts list

Part #	Description
CB-650	Data buoy with polymer-coated foam hull & (3) 30-watt solar panels, 650 lb. buoyancy
CB-A05-2	Battery harness with integrated solar regulator & (2) 28 A-Hr batteries
CB-A05-3	Battery harness with integrated solar regulator & (3) 28 A-Hr batteries
X2-CB	X2-CB buoy-mounted data logger
X2-CB-C-VZ4G	X2-CB buoy-mounted data logger with Verizon 4G LTE cellular telemetry
X2-CB-I	X2-CB buoy-mounted data logger with Iridium satellite telemetry
X2-CB-R-DG	X2-CB buoy-mounted data logger with 900 MHz radio telemetry
M650H-Y	Solar marine light with 4 nautical mile range, 15 flashes per minute, yellow
914M	Deployment pipe assembly with eye bolt & threaded male adapter, 4" schedule 80 PVC, 32" length
CB-ZA	Sacrificial zinc anode for CB-Series data buoys



tel: **937.426.2703**
8am to 7pm EST, Monday-Friday

fax: **937.426.1125**

NexSens Technology, Inc.
2091 Exchange Court
Fairborn, OH 45324
info@nexsens.com

nexsens.com