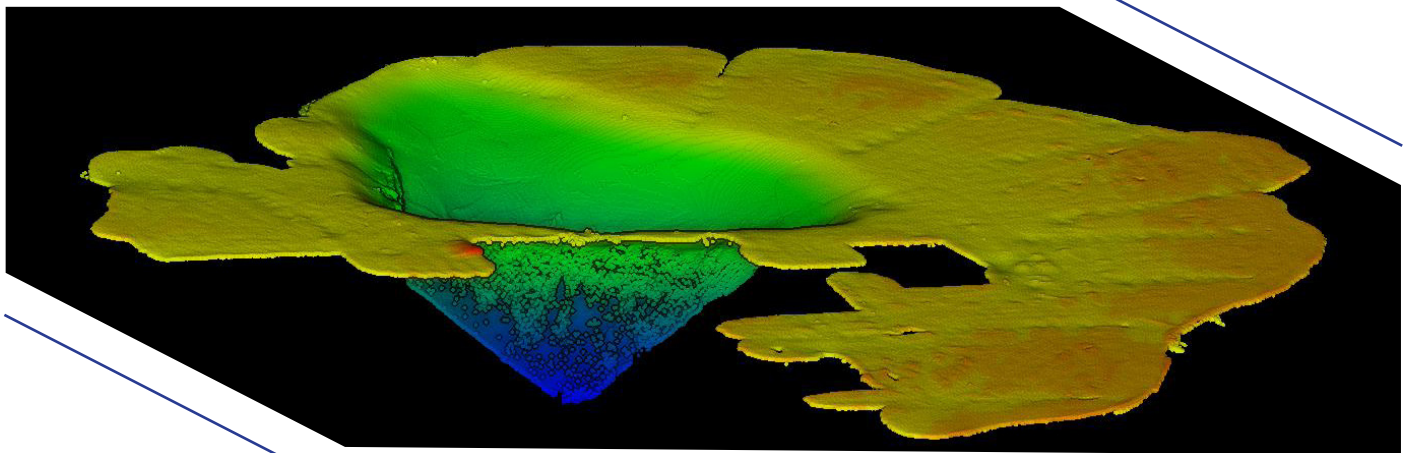


M5 Integrated Multibeam Sonar



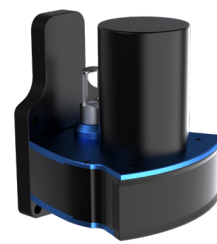
M5 is a highly-versatile, high-resolution multibeam echo sounder, which is also extremely simple to use and to install on the vehicle. The tightly coupled GNSS INS makes it easy to integrate even on ultra-small vehicles and very quick to mobilize. Its hydrodynamic form factor and its low power consumption makes it the perfect choice for small autonomous surface vehicles, data acquisition included.

Ponds and Lakes	★★★★★	University Research	★★★★★
Harbors/Construction	★★★★★	Dredging	★★★★★
Coastal Waters	★★★★★	Archeology	★★★★★
Small Survey Boats	★★★★★	Autonomous Surface Vehicles	★★★★★
Large Survey Boats	★★★	Small Survey Companies	★★★★★



Specifications:

Swath coverage	Up to 130 degrees
Number of RX beams	256
TX beam width along-track	1.45°
RX beam width	1° ±0.1
Range	>200m
Beam distribution	Equi-Distant and equi-angular beam distribution
Roll stabilisation	Yes
Pressure rating	100m
GNSS/INS	INS in Sonar
Position	HOR: ±(8mm +1ppm X Distance from RTK Station) VER: ±(15mm +1ppm X Distance from RTK Station) (Assumes 1m GNSS Separation)
Heading Accuracy	0.08° (RTK) with 2m Antenna Separation
Pitch/Roll Accuracy	0.03° Independent of Antenna Separation
Heave Accuracy	2cm or 2% (TRUEHEAVE™). 5cm or 5% (Real Time)
Ping Rate	50 Hz
Outputs	Bathymetry, Side Scan
Compatible with	Qinsy, Hypack, EIVA and others
Weight	Air: 3.5 kg Water: 1.1 kg



data acquisition included

